



Technical Parameters Table

Parameters Order No.	Overall dimensions (W×D×H)mm	Chamber size (W×D×H)mm	Wash volume	Circulation pump flow	Chamber material	Power supply	Rated power (KW)	Load	Net weight
Smart-T-60	580×530×635	383×373×418	60L	160L/min	316L Mirror panel	220V 50Hz	4.5	It can load with single-layer wash rack Standard configuration: Smart60-24H 24*handpieces + 1*instrument tray Optional: [1] Smart60-00H [2] Smart60-YK	50kg
Smart-T-60G	580×530×635	383×373×418	60L	160L/min	316L Mirror panel	220V 50Hz	4.5		60kg
Smart-T-120G	600×670×850	500×530×470	120L	500L/min	316L Mirror panel	220V 50Hz	5	1*Host Standard configuration: 32*handpieces + 3*instrument trays	90kg
Smart-L-180G	600×670×1740	550×530×620	180L	500L/min	316L Mirror panel	220V 50Hz	7	It can load with single-layer wash rack Standard configuration: Smart175-32H (32*handpieces + 3*instrument trays) Optional: [1] Smart180-00H [2] Smart180-64H [3] Smart180-32HZ [4] Smart180-YK [5] Smart180-TX [6] Smart180-NP [7] Smart180-BGP	110kg
Smart-L-180GD	600×670×1740	550×530×620	180L	500L/min	316L Mirror panel	220V 50Hz	7		130kg



Smart  
Automatic Washer-disinfector

SHINVA MEDICAL INSTRUMENT CO., LTD  
Address:Xinhua Medical Scientific Zone, Zibo New & Hi-Tech Industrial Development Zone,  
Shandong Province, P.R. China  
Sales Tel: +86 533 3587720 / 3587719  
Email: sales@shinva.com  
Website: www.shinva.com

\*Version: 2022. 01



# Smart Automatic Washer-disinfector

## Product application

Smart Automatic Washer-disinfector is mainly used for washing, disinfection and drying of dental instruments, ophthalmic instruments, general surgical instruments, utensils, plastic products and other instruments. Its design and manufacture are in accordance with the requirements of "YY/T 0734-2018 Washer-disinfector".

## Product features

- ⦿ **Washing chamber:** made of 316L stainless steel, mold forming, strong corrosion resistance, high sanitation level
- ⦿ **Cycle flow:** pre-washing, washing, rinsing, disinfection (A0 value $\geq$ 3000 ), drying (if any)
- ⦿ **Efficient washing:** imported European high-flow circulation pump, to meet the full range of dynamic washing
- ⦿ **Drying system:** optional or standard with drying function, using H13 high efficiency filter + high pressure fan + steam condensation mode
- ⦿ **Safety door lock:** mechanical electronic door lock, can not open the door when cycle running, can open the door in case of emergency when power failure
- ⦿ **Filling water:** flow-meter control mode, stronger water adaptability
- ⦿ **Drainage:** independent pump drainage, to meet the requirements of the upper drainage and avoid secondary pollution; optional drainage cooling function
- ⦿ **Information recording:** optional or standard built-in needle printer, optional electronic storage module, U disk to quickly read PDF data
- ⦿ **Operation mode:** color touch screen, which supports the program real-time dynamic curve display



Smart-L-180G



Smart-T-120G



Smart-T-60G



# Smart Automatic Washer-disinfector



## Dental Wash Rack

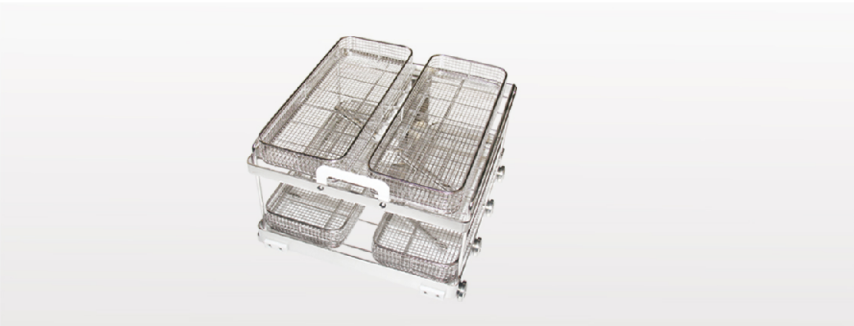
Professional dental instrument washing. According to the type of surgery, you can choose dental handpiece wash rack, instrument wash box, dental drill box or wash rack carried special instruments for washing and disinfection and maintenance of instruments.



Dental Handpiece  
Built-in multi-layer composite stainless steel filter to prevent damage to instruments



- Order number: Smart60-24H
- Features: Suitable for Smart Series 60L
- Loading capacity: 24\*dental handpieces + 1\*instrument tray (330×130×45mm)



- Order number: Smart60-00H
- Features: Suitable for Smart Series 60L
- Loading capacity: 4\*instrument trays (330×130×45mm)



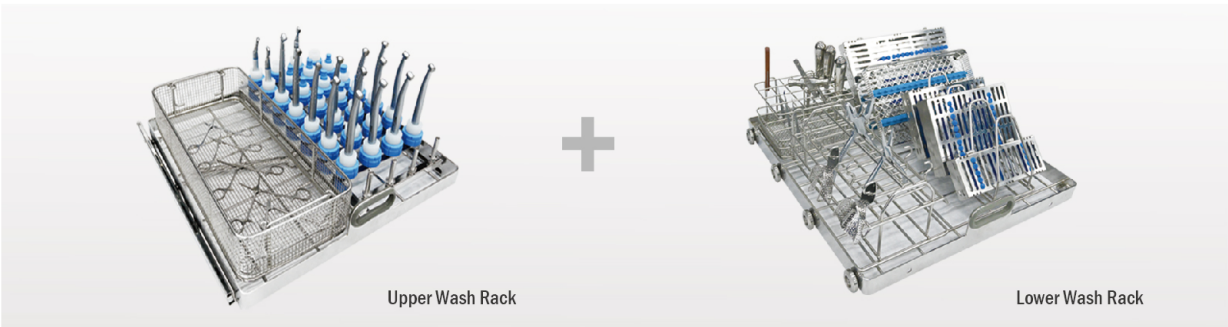
- Order number: Smart180-00H
- Features: Suitable for Smart Series 180L
- Loading capacity: 4 instrument trays (462×220×50mm)



- Order number: Smart180-32H
- Features: Suitable for Smart Series 180L
- Loading capacity: 32\*dental handpieces +3 \* instrument trays (462×220×50mm)



- Order number: Smart180-64H
- Features: Suitable for Smart Series 180L
- Loading capacity: 64\*dental handpieces + 2\*instrument trays (462×220×50mm)



- Order number: Smart180-32HZ
- Features: Suitable for Smart series 180L
- Advantages: 32\*dental handpieces +single integrated instrument wash rack
- Loading capacity: 28\*dental handpieces +single integrated instrument wash rack
- Maximum loading: 100\*dental probes, scalpels and other rod-shaped instruments; 20\*dental braces; 10\*dental brackets and dental rulers; 20\*dental pliers and dental hammers
- Maximum loading: 5\* 16pcs instrument boxes, etc.



# Smart Automatic Washer-disinfector



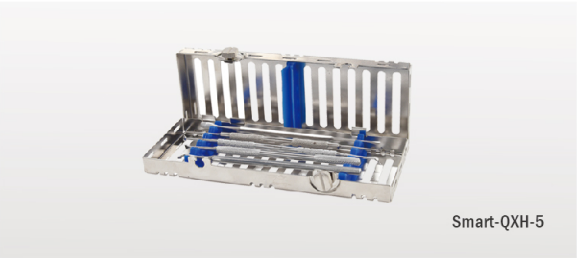
## Dental Instrument Box

SHINVA Dental Instrument Box is used for washing, disinfection, sterilization and storage of commonly used dental instruments, which can greatly improve the integrity of the instrument set. During the cycle of instruments from washing to chairside, it can not only reduce human contact and reduce the risk of sharps damage, but also reduce the use of packaging consumables and provide a safer solution.

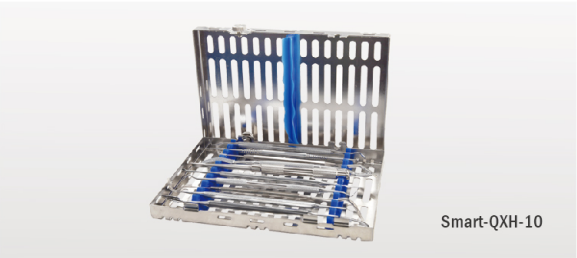


For different dental surgical instruments, choose one or several instrument boxes to form a special treatment set , which is more professional and efficient:

● Periodontal non-surgical set	Double-layer 16pcs instrument box
● Preventive treatment set	10pcs instrument box
● Diagnostic treatment set	5pcs instrument box
● Orthodontic surgical set	Double-layer orthodontic large instrument box
● Orthodontic archwire adjustment set	Double-layer orthodontic instrument box
● Dental prosthesis repair surgery set	16pcs instrument box + multifunctional micro-instrument box + dental drill holder
● Bonding surgical set	16pcs instrument box + multifunctional micro-instrument box + dental drill holder
● Coronary artery bypass surgical set	16pcs instrument box + multifunctional micro-instrument box + dental drill holder
● Amalgam filling surgical set	16pcs instrument box + multifunctional micro-instrument box + dental drill holder
● Resin filling surgical set	16pcs instrument box + multifunctional micro-instrument box + dental drill holder
● Root canal surgical set	16pcs instrument box + multifunctional micro-instrument box + dental drill holder
● Upper frontal sinus lift set	16pcs instrument box
● Suture removal set	10pcs instrument box



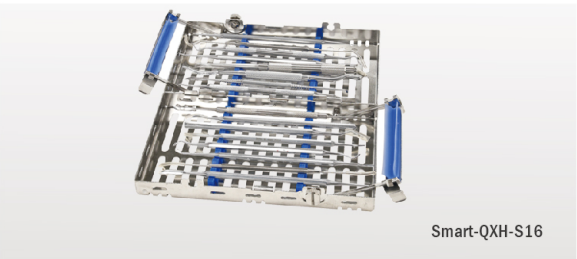
**5pcs instrument box**  
Overall dimensions(76mm×203mm×32mm)  
5 \*dental instruments  
For dental instrument washing, sterilization, storage and turnover



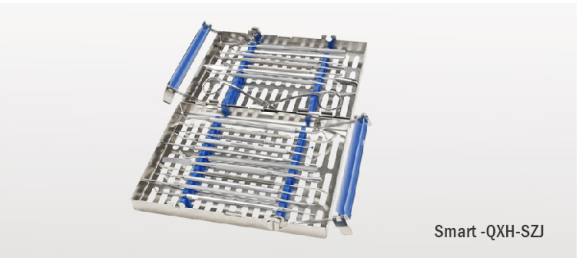
**10pcs instrument box**  
Overall dimensions(140mm×203mm×32mm)  
10 \*dental instruments  
For dental instrument washing, sterilization, storage and turnover



**16pcs instrument box**  
Overall dimensions(203mm×280mm×32mm)  
16 \*dental instruments  
For dental instrument washing, sterilization, storage and turnover



**Double-layer 16pcs instrument box**  
Overall dimensions(114mm×203mm×38mm)  
16 \*dental instruments  
For dental instrument washing, sterilization, storage and turnover



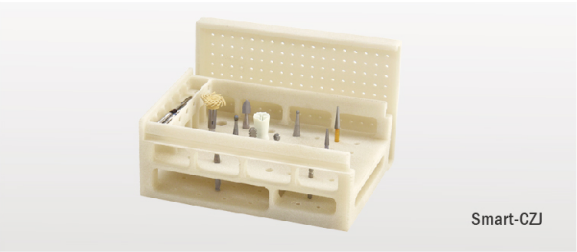
**Double-layer orthodontic large instrument box**  
Overall dimensions(152mm×203mm×38mm)  
20\* dental instruments  
For dental instrument washing, sterilization, storage and turnover



**Diamond-shape instrument box**  
Overall dimensions(175mm×275mm×35mm)  
16\* dental instruments  
For dental instrument washing, sterilization, storage and turnover



**Multifunctional micro-instrument box**  
Overall dimensions(73mm×132mm×10mm)  
At least 12\*endodontic needles, 9\*dental drill, 5\*nerve-broach, and 4\*molding pieces  
For micro-instrument washing, sterilization, storage and turnover



**Dental drill holder**  
Overall dimensions(50mm×80mm×32mm)  
At least 12 thicker dental drills and 20 thinner dental drills, with a spare area  
For dental drill washing, sterilization, storage and turnover



# Smart Automatic Washer-disinfector



## Ophthalmic Wash Rack

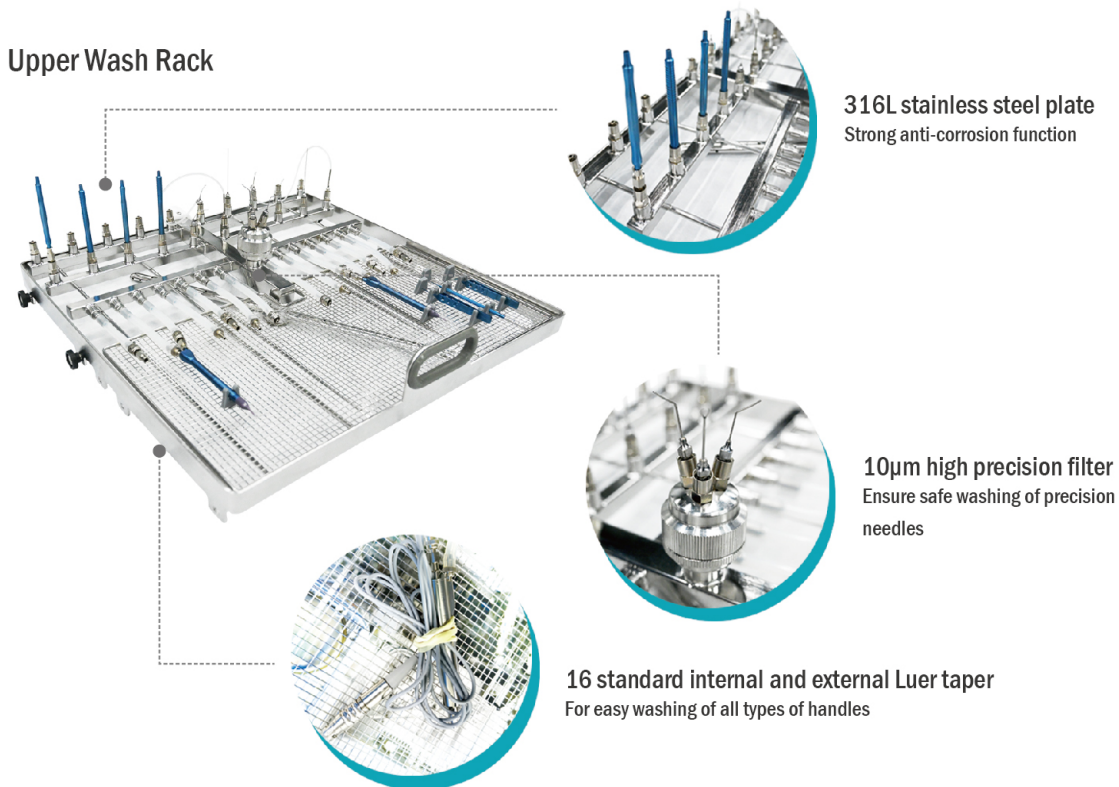
### Smart180-YK

The Smart180-YK is designed for ophthalmic instruments, with 22 universal needle connections, 3 precision needle connections and 16 horizontal ophthalmic lumen connections on the upper wash rack; 2 ophthalmic instrument wash baskets and 32 silicone sockets on the lower wash rack; optional ophthalmic diamond-shaped instrument box.

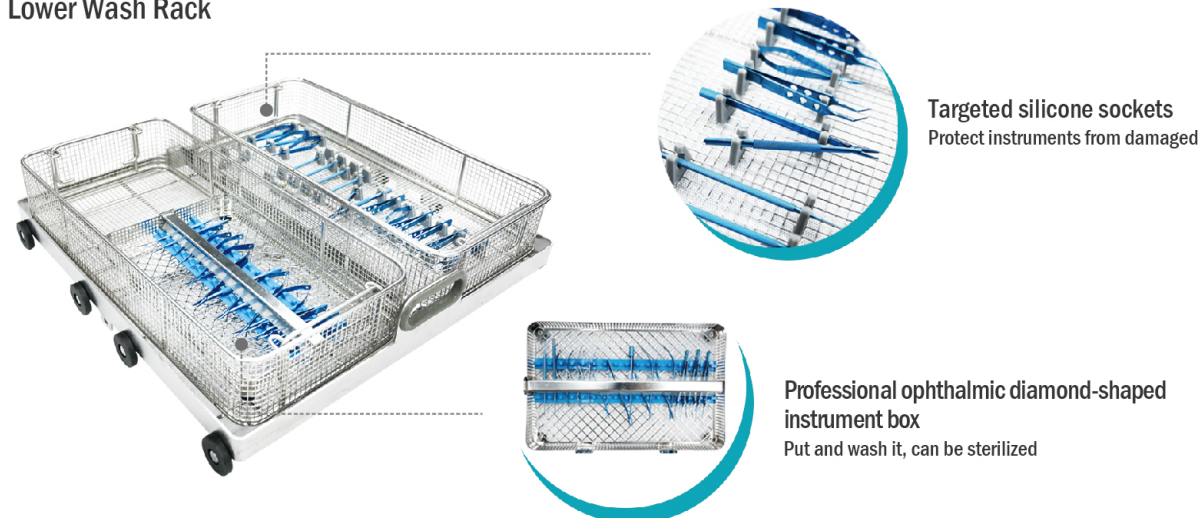
### Smar60-YK

Smar60-YK is designed for ophthalmic instruments, with 13 universal needle connections, 3 precision needle connections, 10 horizontal ophthalmic lumen connections and 10 silicone sockets.

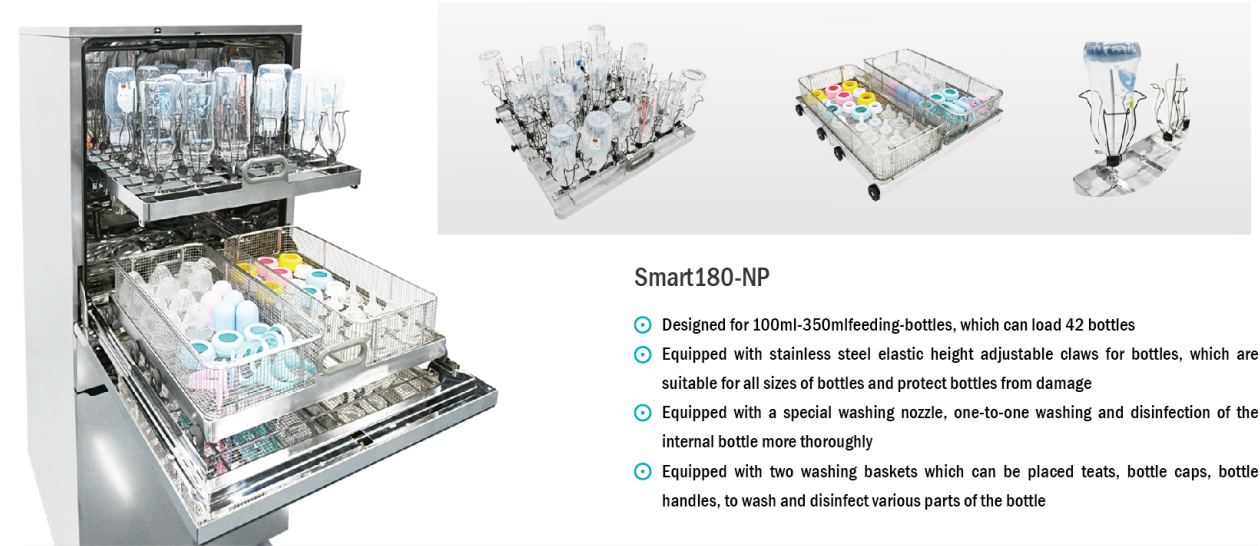
### Upper Wash Rack



### Lower Wash Rack



## Feeding-bottle Wash Rack



## Cupping-bottle Wash Rack



## Slipper Wash Rack

